

Bracing installation sequence:

1. Install interior face ledger at top of upper level wall.
2. Verify or provide solid rim board at upper floor elevation.
3. Install (2) 2x10 ledgers at t/wall and upper floor elevation.
4. Install anchor plates and 2x8 T-braces with middle 2x6 T-braces to upper floor elevation.
5. Install stud/floor blocking at upper floor elevation and top of upper level wall beyond.
6. Install holdown devices & begin tightening incrementally to bring brick to flush/plumb condition.
7. After incrementally tightening holdown devices, re-fasten braces tight to ledger as required.

B

Mount 2x8 T-brace to (2) 2x10 ledger with birdmouth cut & (4) 16d toenails

(2) 2x10 P.T. ledger across front of building at T/brick with (2) 1/2" dia. thru bolts @ 48" o.c.

Mount middle 2x6 T-brace to (2) 2x10 ledger with birdmouth cut & (4) 16d toenails

existing stud wall beyond at upper level

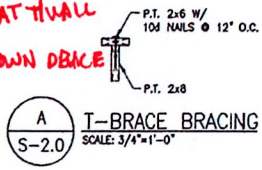
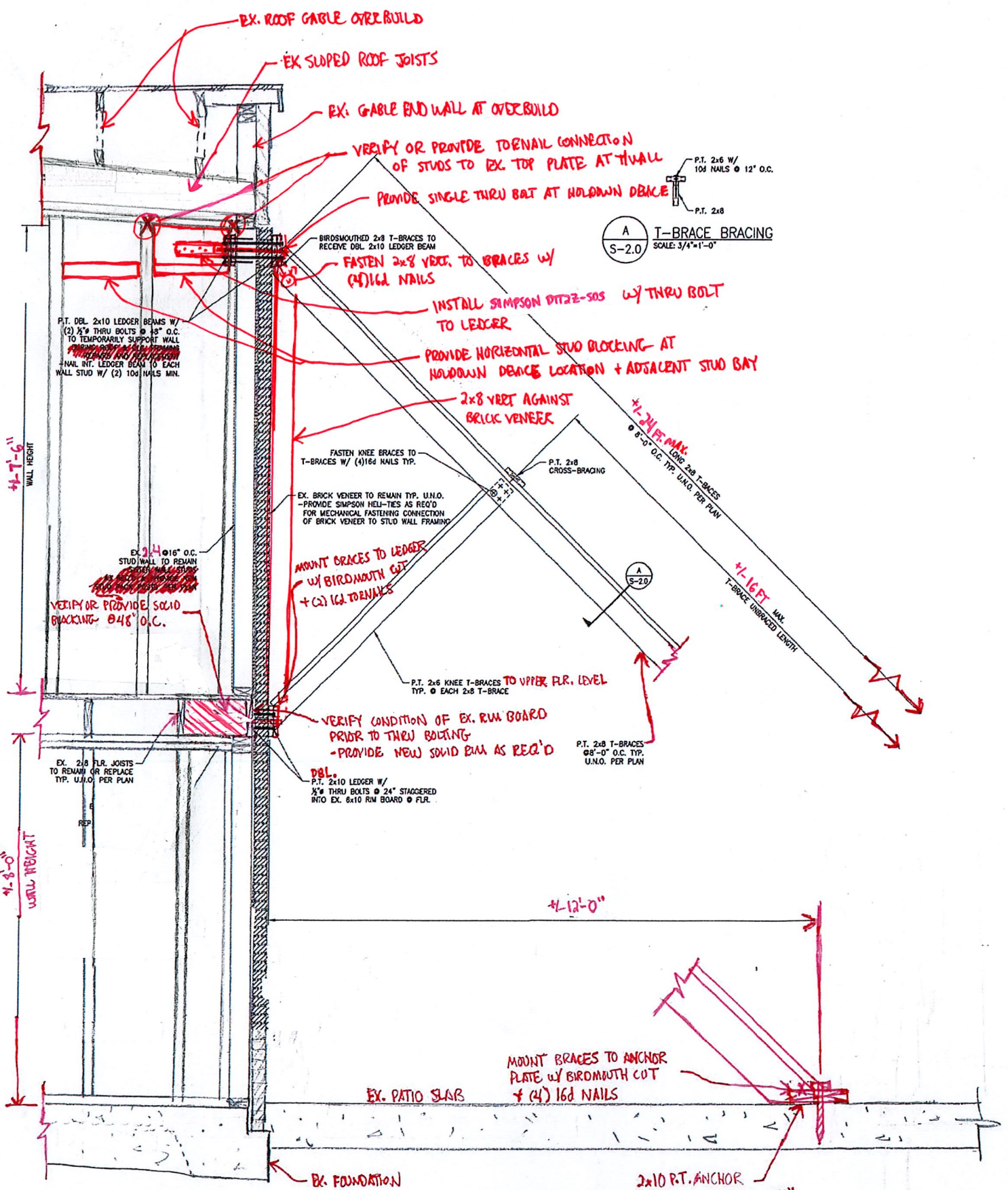
Single thru bolt to holddown at stud wall beyond

(2) 2x10 P.T. ledger across front of building at upper level floor elevation with (2) 1/2" dia. thru bolts @ 48" o.c.

2x8 T-braces at third points of front wall with middle 2x6 T-brace to upper floor level and 2x8 vertical member. Provide extra T-braces in between as required during field installation.

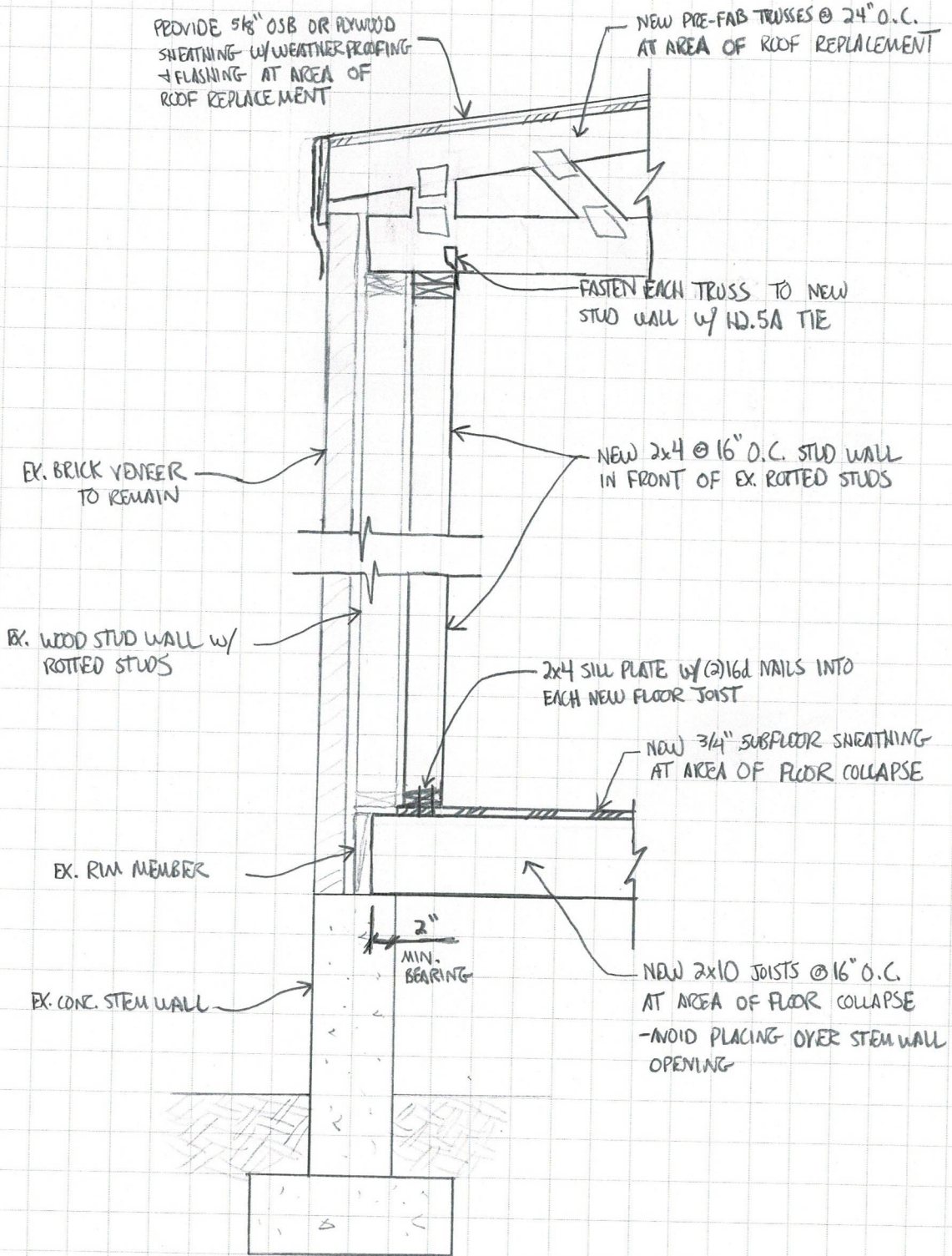
existing stud wall beyond at lower level

A/S-2.0 Front Wall Elevation for Temporary Bracing at Building A

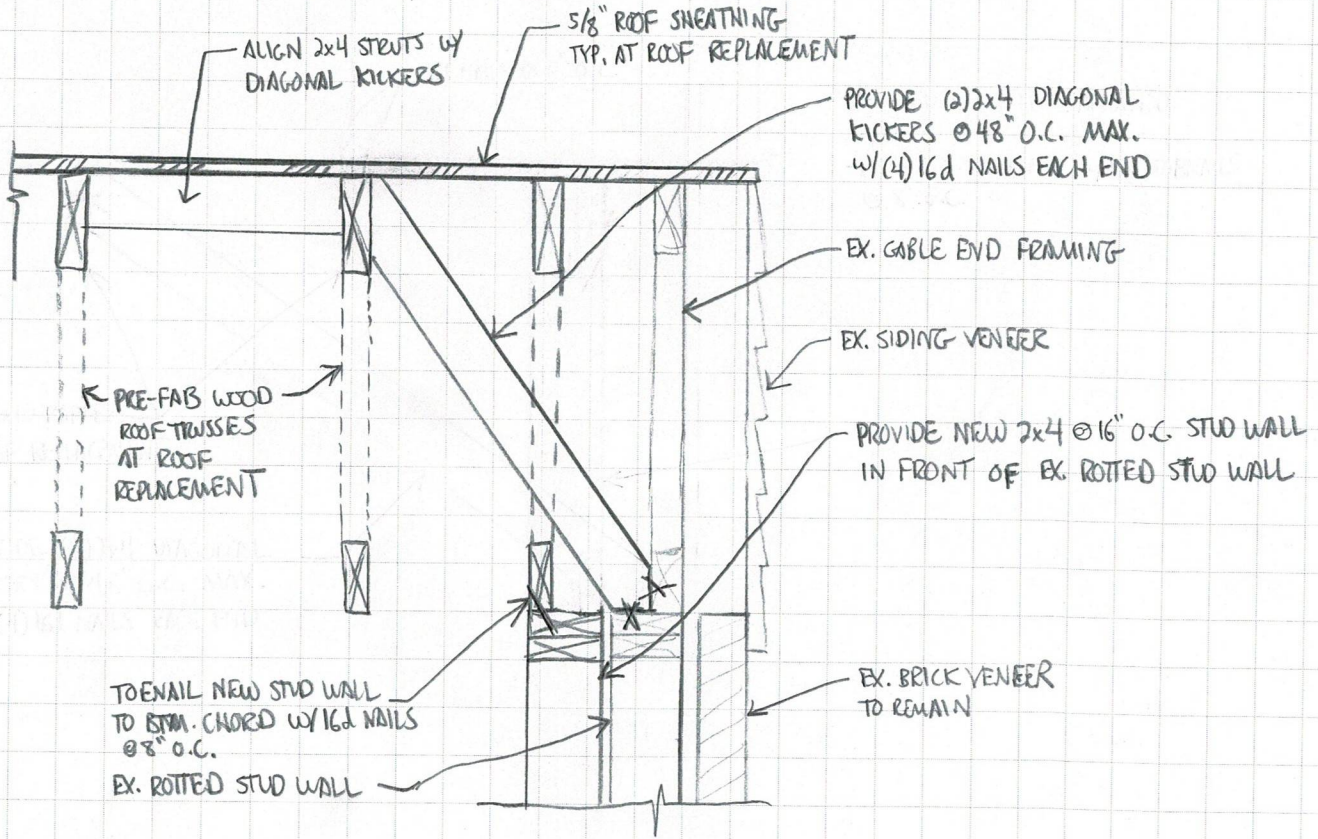


B/S-2.0 FULL-HEIGHT WALL SECTION AT TEMPORARY BRACING

2x10 P.T. ANCHOR PLATE W/ (4) 1/2" x 3/4" CONG. SCREW ANCHORS INTO EX. CONG. -2" ANCHOR EMBEDMENT



C/S-2.0 - SECTION AT STUD WALL / F.L.R. JOIST



D/S-2.0 - GABLE END FRAMING

